



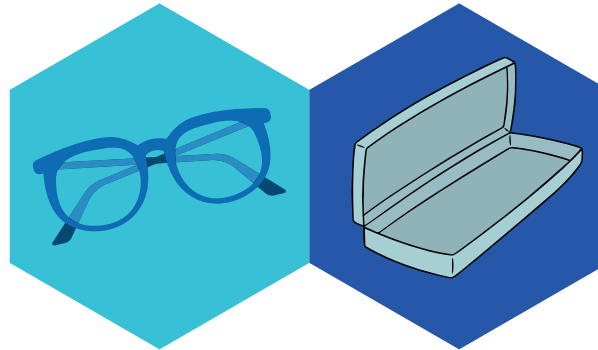
# MYO PRO<sup>®</sup>

## Fitting Guide

Guidelines on Daily Wear for Children and Adolescents

### Wearing Time

To better utilize the myopia control efficacy of the lenses, it is recommended to wear them for more than 12 hours per day, except during sleep or bathing.

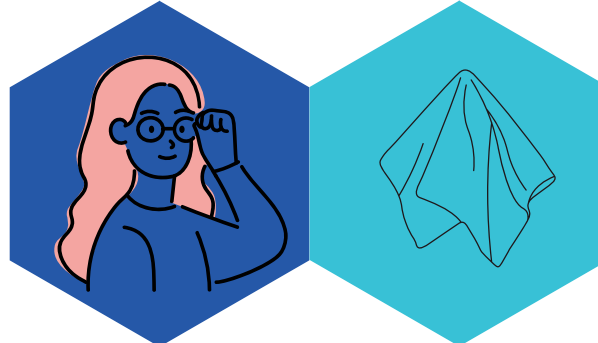


### Storage Method

To wrap the lenses with a clean cloth, fold the temples and store them in the case, alternatively, place the glasses with the lenses facing upwards in a location free from external pressure.

### Wearing Position

To position correctly as indicated by the professional optician during the initial fitting process. Improper positioning may affect visual clarity and the efficacy of myopia control.



### Lens Cleaning

Avoid wiping the lens directly using a cloth as it may scratch them. It is recommended to clean the lenses with an ultrasonic cleaner or rinse them with water, then use a specialized lens cloth for a thorough cleaning.



EAST OPTICAL

[www.myopro.ca](http://www.myopro.ca)



# MYO PRO<sup>®</sup>

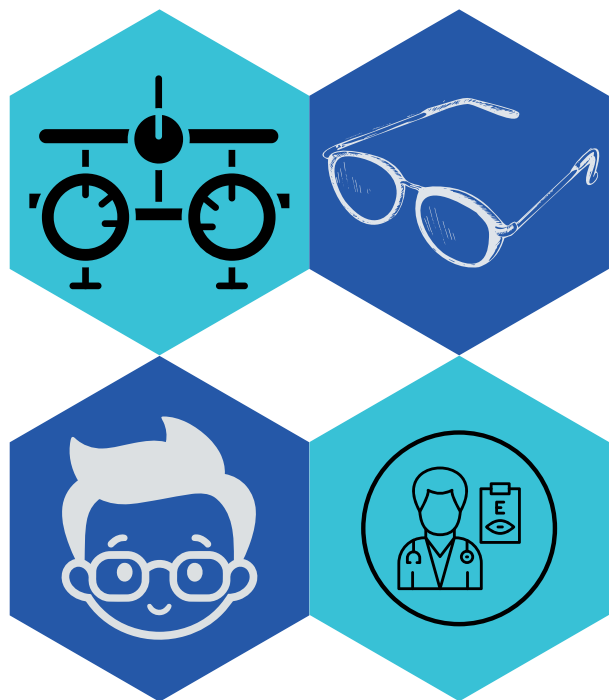
## Frame Selection

### Proper Fit

$28\text{MM} \leq \text{Frame Height} \leq 48\text{ MM}$   
(Frame width + Nose Bridge Distance -  
(Right Eye Pupillary Distance + Left Eye  
Pupillary Distance)  $\leq 8\text{ mm}$ .

### Easy to Adjust

Temples and nose pads are adjustable. By making adjustments, the fit of the glasses becomes more suitable and functionality of the lenses is more effectively utilized.



### Wearing Stability

Sturdy and not easily deformed.  
To prevent the frame from slipping down, the temple end should be adjusted to fit the child's ear upper point.

### ECP Guide

Stable Wearing Experience: Aesthetically pleasing and appealing to children. High quality materials, lightweight. Easy to adjust.



EAST OPTICAL



# MYO PRO<sup>®</sup>

## Assembly Instructions

### Fitting Precautions

To ensure the better myopia control efficacy, please provide the following information during fitting:

#### Single Pupil Distance

Monocular pupillary distance  $\neq$  binocular pupillary distance. The pupillary distances of the left and right eyes should be measured separately to ensure that the optical center of the lenses aligns with the center of each pupil.



#### Full Correction

Reducing the prescription intentionally will decrease the effectiveness of the myopia prevention control.



#### Single Fitting Height

Measure the pupillary height for each eye (left and right) separately. Do not assume they are identical, as this ensures proper alignment for the optical center of the lenses with the center of each pupil.

